

5216 (Indole)

Name: 1,3'-Bis(2',3-di(methylthio)-2,4,4',6,6'-pentabromo)indole;
2,4,4',6,6'-pentabromo-2',3-bis(methylthio)-1,3'-bi-1*H*-indole⁽¹⁾
{2,4,6,4',6'-Pentabromo-3,2'-bis-methylsulfanyl-1'*H*-[1,3']biindolyl}

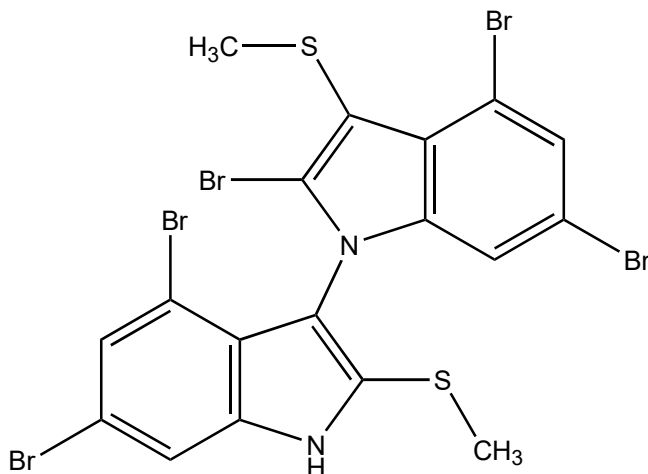
Origin: *Laurencia brongniartii* (Kikai Island, Kagoshima Prefecture, Japan)⁽¹⁾;

Formula: C₁₈H₁₁Br₅N₂S₂

Mol. Wt.: 718.94

Opt. Rot.: [α]_D²⁵ 0 (MeOH)

Mp.: 243-245



References and Notes

(1) Kubota, N. K., Iwamoto, H., Fukazawa, Y., and Uchio, Y. 2005. *Heterocycles*, **65**, 2675-2682. Five new sulfur-containing polybrominated indoles from the red alga *Laurencia brongniartii*.

(X-ray crystallographic analysis) (UV, IR, ¹H-NMR, ¹³C-NMR) (together with new and known sulfur-containing bromoindoles)