

## 5218 (Indole)

Name: 1,3'-Bis(2,3-di(methylthio)-2,4,4',5,6,6'-hexabromo)indole  
2,4,4',5,6,6'-hexabromo-2,3'-bis(methylthio)-1,3'-bi-1*H*-indole<sup>(1)</sup>  
{2,4,5,6,4',6'-Hexabromo-3,2'-bis-methylsulfanyl-1'*H*-[1,3']biindolyl}

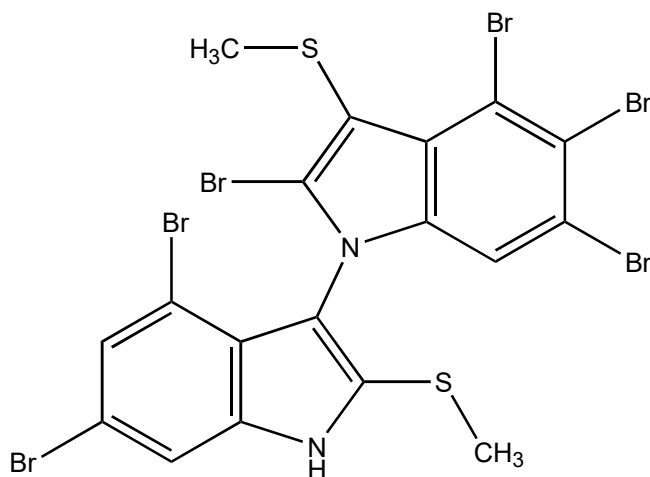
Origin: *Laurencia brongniartii* (Kikai Island, Kagoshima Prefecture, Japan)<sup>(1)</sup>;

Formula: C<sub>18</sub>H<sub>10</sub>Br<sub>6</sub>N<sub>2</sub>S<sub>2</sub>

Mol. Wt.: 797.84

Opt. Rot.: [α]<sub>D</sub><sup>25</sup> 0 (MeOH)

Mp.:



### References and Notes

- (1) Kubota, N. K., Iwamoto, H., Fukazawa, Y., and Uchio, Y. 2005. *Heterocycles*, **65**, 2675-2682. Five new sulfur-containing polybrominated indoles from the red alga *Laurencia brongniartii*. (UV, IR, <sup>1</sup>H-NMR, <sup>13</sup>C-NMR) (together with new and known sulfur-containing bromoindoles)