

5302 (Indole)

Name: 4,7-Dibromo-2,3-dichloroindole

{4,7-Dibromo-2,3-dichloro-1*H*-indole}

Origin: *Rhodophyllis membranacea* (Seal Reef on the Kaikoura Coast of South Island, New Zealand)⁽¹⁾;

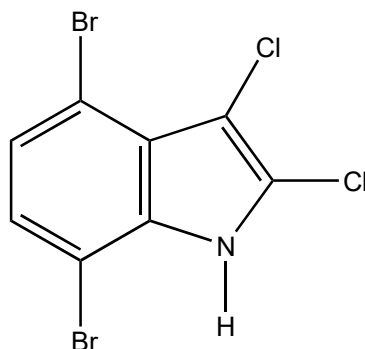
Rhodophyllis membranacea (Mao Point, Wellington, New Zealand)⁽²⁾;

Formula: C₈H₃Br₂Cl₂N

Mol. Wt.: 343.83

Opt. Rot.:

Mp.: White film⁽²⁾



References and Notes

(1) Brennan, M. R., and Erickson, K.L. 1978. Tetrahedron Lett., **19**, 1637-1640. Polyhalogenated indoles from the marine alga *Rhodophyllis membranacea* Harvey. (¹H-NMR)

(2) Woolner, V. H., Jones, C. M., Field, J. J., Fadzilah, N. H., Munkacsi, A. B., Miller, J. H., Keyzers, R. A., and Northcote, P. T. 2016. J. Nat. Prod., **79**, 463-469. Polyhalogenated indoles from the red alga *Rhodophyllis membranacea*. : The first isolation of bromo-chloro-iodo secondary metabolites.

(UV, ¹H-NMR, ¹³C-NMR, MS) (together with 11 new bromo-chloro-iodo tetrahalogenated indoles, 3 known indoles; 2,3,4,7-tetrabromoindole, 4,7-dibromo-2,3-dichloroindole, 7-bromo-2,3,4-trichloroindole)