

5308 (Indole)

Name: 7-Bromo-2,3-dichloro-6-iodoindole

{7-Bromo-2,3-dichloro-6-iodo-1*H*-indole}

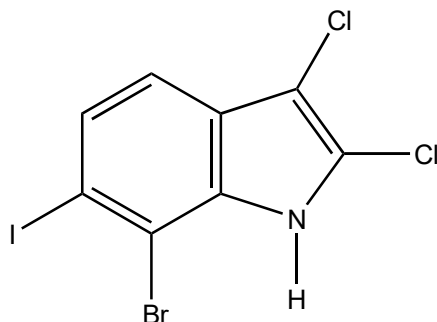
Origin: *Rhodophyllis membranacea* (Mao Point, Wellington, New Zealand)⁽¹⁾;

Formula: C₈H₃BrCl₂I

Mol. Wt.: 390.83

Opt. Rot.:

Mp.: White film



References and Notes

(1) Woolner, V. H., Jones, C. M., Field, J. J., Fadzilah, N. H., Munkacsi, A. B., Miller, J. H., Keyzers, R. A., and Northcote, P. T. 2016. *J. Nat. Prod.*, **79**, 463-469. Polyhalogenated indoles from the red alga *Rhodophyllis membranacea*. : The first isolation of bromo-chloro-iodo secondary metabolites. (UV, ¹H-NMR, ¹³C-NMR, MS) (together with 11 new bromo-chloro-iodo tetrahalogenated indoles, 3 known indoles; 2,3,4,7-tetrabromoindole, 4,7-dibromo-2,3-dichloroindole, 7-bromo-2,3,4-trichloroindole)