

## 5310 (Indole)

Name: 3,7-Dibromo-2-chloro-6-iodoindole

{3,7-Dibromo-2-chloro-6-iodo-1*H*-indole}

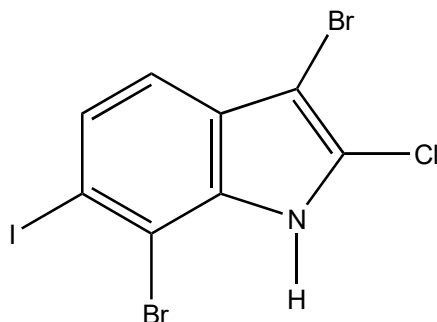
Origin: *Rhodophyllis membranacea* (Mao Point, Wellington, New Zealand)<sup>(1)</sup>;

Formula: C<sub>8</sub>H<sub>3</sub>Br<sub>2</sub>ClIN

Mol. Wt.: 435.28

Opt. Rot.:

Mp.: White film



### References and Notes

(1) Woolner, V. H., Jones, C. M., Field, J. J., Fadzilah, N. H., Munkacsi, A. B., Miller, J. H., Keyzers, R. A., and Northcote, P. T. 2016. *J. Nat. Prod.*, **79**, 463-469. Polyhalogenated indoles from the red alga *Rhodophyllis membranacea*. : The first isolation of bromo-chloro-iodo secondary metabolites. (UV, <sup>1</sup>H-NMR, <sup>13</sup>C-NMR, MS) (together with 11 new bromo-chloro-iodo tetrahalogenated indoles, 3 known indoles; 2,3,4,7-tetrabromoindole, 4,7-dibromo-2,3-dichloroindole, 7-bromo-2,3,4-trichloroindole)