

7202 (Miscellaneous)

Name: (2Z)-2-Chloro-pentadec-2-enal

{2-Chloro-pentadec-2-enal}

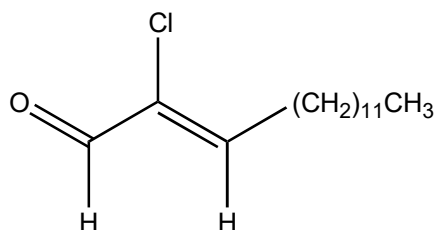
Origin: *Laurencia flexilis* (Barrio Pangil, Curimao, Ilocos Nortes, Philippines)⁽¹⁾

Formula: C₁₅H₂₇ClO

Mol. Wt.: 258.83

Opt. Rot.: Inactive

Mp.: Oil



References and Notes

(1) de Nys, R., König, G. M., Wright, A. D., and Sticher, O. 1993. *Phytochemistry*, **34**, 725-728. Two metabolites from the red alga *Laurencia flexilis*. (UV, IR, ¹H-NMR, ¹³C-NMR, MS) (together with two new chamigranes, known sesquiterpenes; palisol, debromolaurinterol, pacifigorgiol, α-bromocuparene)