

7218 (Miscellaneous)

Name: Papillamide

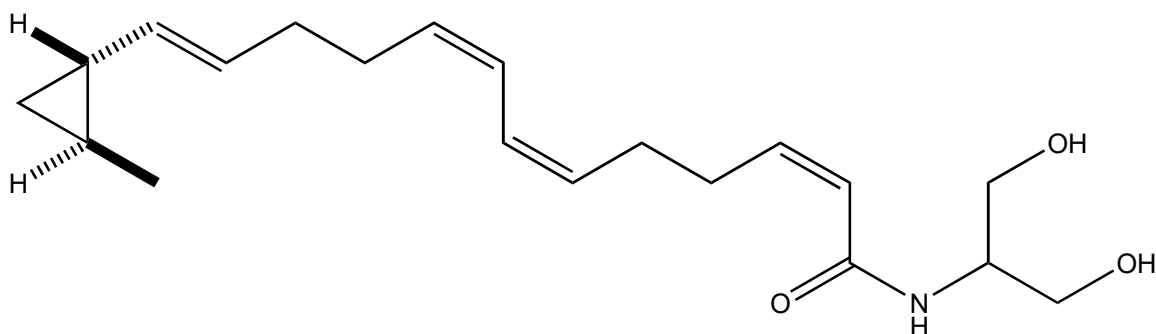
Origin: *Laurencia papillosa* (Ishigaki Island, Okinawa Prefecture, Japan)⁽¹⁾;

Formula: C₂₀H₃₁NO₃

Mol. Wt.: 333.47

Opt. Rot.: [α]_D²⁰ (MeOH)

Mp.: Colorless amorphous powder



References and Notes

(1) Maru, N., Ohno, O., Koyama, T., Yamada, K., and Uemura, D. 2010. Chem. Lett., **39**, 366-367.

Papillamide, a novel fatty acid amide from the red alga *Laurencia papillosa*. (IR, ¹H-NMR, ¹³C-NMR)