

7302#3 (Miscellaneous)

Name: Bromosphaerene B

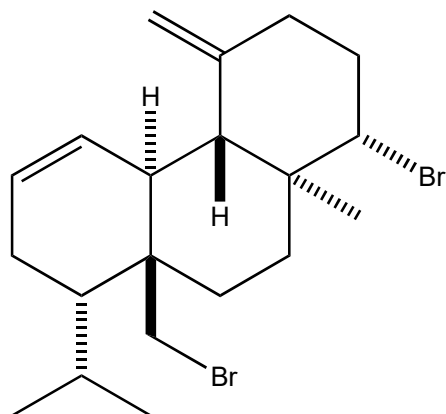
Origin: *Sphaerococcus coronopifolius* (the Bay of Salerno, Italy)⁽¹⁾;

Formula: C₂₀H₃₀Br₂

Mol. Wt.: 430.26

Opt. Rot.: [α]_D²⁰ -95 (CHCl₃)

Mp.: 96-98



References and Notes

- (1) Cafieri, F., Ciminiello, P., Santacroce, C., and Fattorusso, E. 1982. *Phytochemistry*, **22**, 1824-1825. Three diterpenes from the red alga *Sphaerococcus coronopifolius*. (¹H-NMR, MS) (together with presphaerene, bromosphaerene A, [bromosphaerene B](#))