

7315# (Miscellaneous)

Name: Sphaerodiene

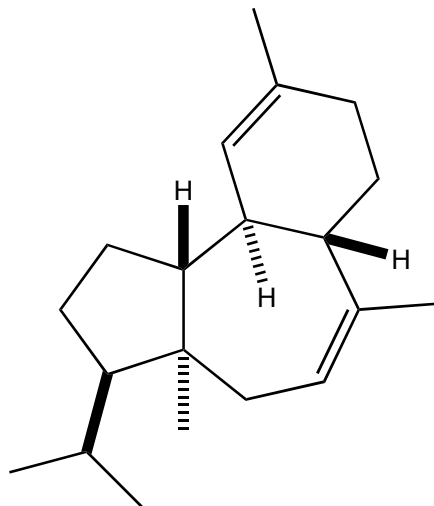
Origin: *Sphaerococcus coronopifolius* (Syracuse, Sicily, Italy)⁽¹⁾;

Formula: C₂₀H₃₂

Mol. Wt.: 272.47

Opt. Rot.: [α]_D +44.93 (CHCl₃)

Mp.: Oil



References and Notes

(1) Cafieri, F., Fattorusso, E., Di Blasio, B., and Pedon, C. 1981. *Tetrahedron Lett.*, **22**, 4123-4126. Diterpenes from the red alga *Sphaerococcus coronopifolius*. Structure of sphaerodiene and reassignment of structure of presphaerol. (¹H-NMR)