

7316 (Miscellaneous)

Name: Presphaerol

Origin: *Sphaerococcus coronopifolius* (Syracuse, Sicily, Italy)^(1,2);

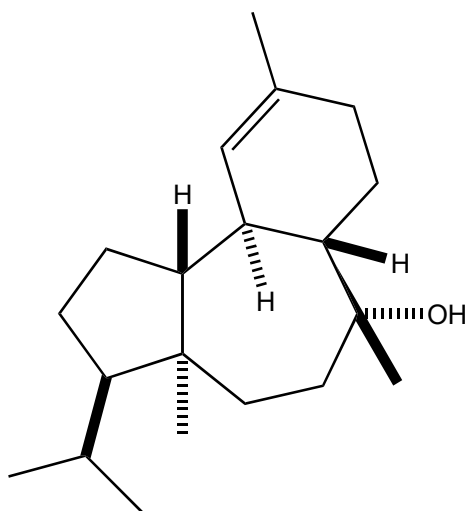
Sphaerococcus coronopifolius (Palaiokastritsa Bay, the west coast of Corfu Island, Greece)⁽³⁾;

Formula: C₂₀H₃₄O

Mol. Wt.: 290.48

Opt. Rot.: [α]_D +26 (CHCl₃)

Mp.: Viscous liquid



References and Notes

(1) Cafieri, F., de Napoli, L., Fattorusso, E., Piattelli, M., and Sciuto, S. 1979. *Tetrahedron Lett.*, **20**, 963-966. Presphaerol, a new rearranged diterpenes from the alga *Sphaerococcus coronopifolius*.

(IR, ¹H-NMR, ¹³C-NMR)

(2) **Structure revision**; Cafieri, F., Fattorusso, E., Di Blasio, B., and Pedon, C. 1981. *Tetrahedron Lett.*, **22**, 4123-4126. Diterpenes from the red alga *Sphaerococcus coronopifolius*. Structure of sphaerodiene and reassigment of structure of presphaerol.

(3) Smyrniotopoulos, V., Vagias, C., and Roussis, V. 2009. *Mar. Drugs*, **7**, 184-195. Sphaeroane and neodolabellane diterpenes from the red alga *Sphaerococcus coronopifolius*.

(¹H-NMR, ¹³C-NMR) (together with sphaerollane I, sphaerollane II, 16-hydroxy-9*S**-acetoxy-8-*epi*-isosphaerodiene-2, [presphaerol](#), isosphaerodiene-1)